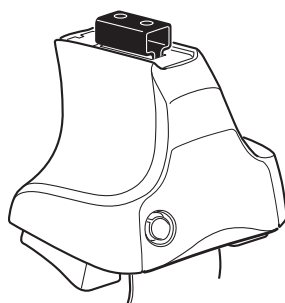
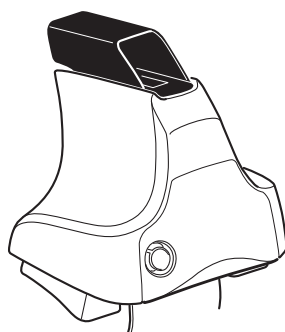
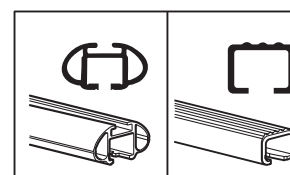


# Kit 1714

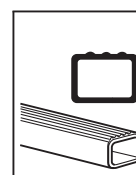
**ISUZU D-Max, 4-dr Space Cab, 12-**  
**ISUZU D-Max, 4-dr Extended Cab, 12-**



**754** Rapid System  
**480R** Rapid Traverse (North America)



**480** Traverse (North America)

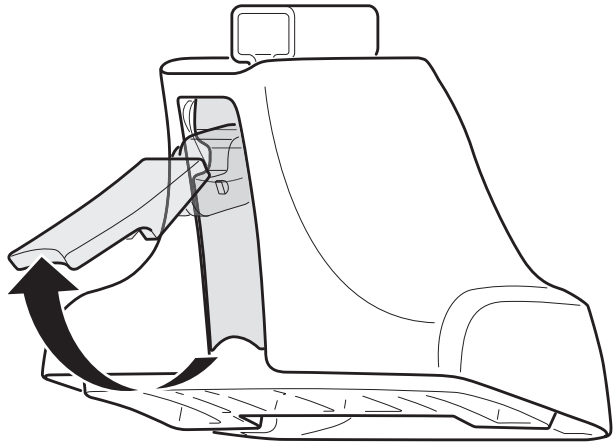


- 754 Rapid System: x1 ruler, x4 Rapid System, x4 480R Rapid Traverse (North America), x4 screws, x4 washers
- 480R Rapid Traverse (North America): x1 ruler, x4 480R Rapid Traverse (North America), x4 screws, x4 washers
- 480 Traverse (North America): x1 ruler, x4 480 Traverse (North America), x4 screws, x4 washers

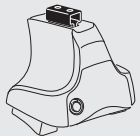
- Bar: x2
- Hardware: x2 (23 mm), x2 (23 mm), x4 screws, x4 washers, x1 (17 mm), x2 (23 mm), x2 (23 mm), x4 screws, x4 washers
- (North America): x2 (23 mm), x2 (23 mm), x2 (23 mm), x2 (23 mm), x2 (23 mm), x2 (23 mm)

- Bracket 1234: x2
- Bracket 1245: x2
- Bracket 390: x2
- Bracket 391: x1
- Bracket 392: x1
- Orientation diagram: x1

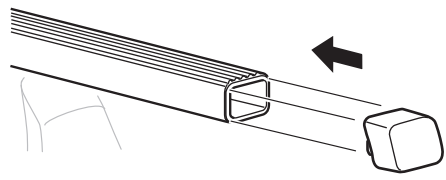
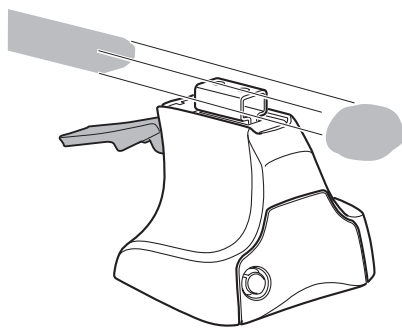
1



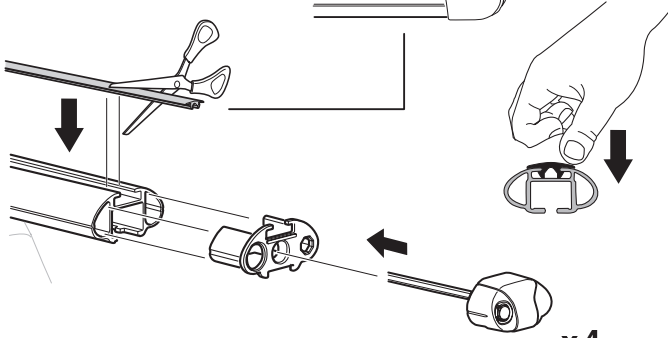
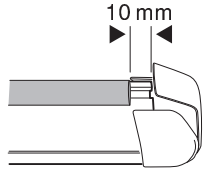
2



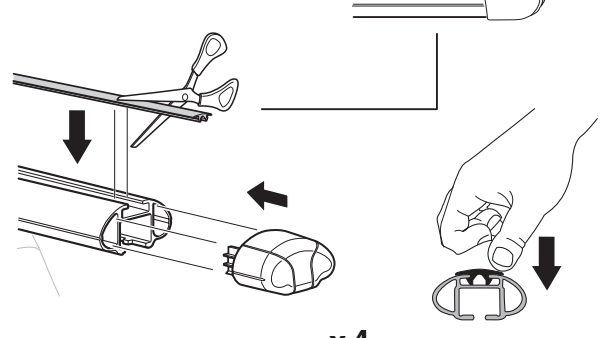
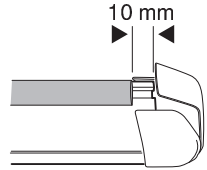
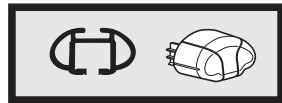
754 Rapid System  
480R Rapid Traverse  
(North America)



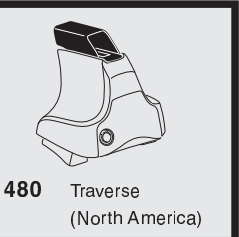
x4



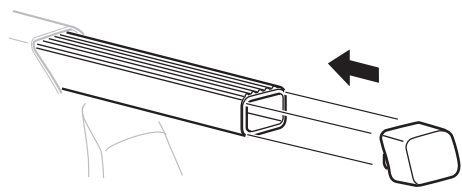
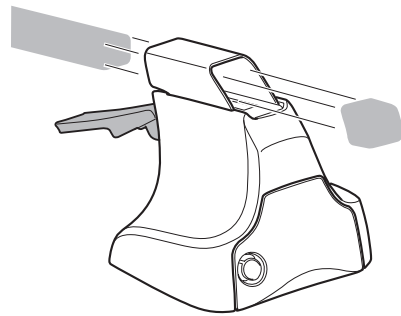
x4



x4

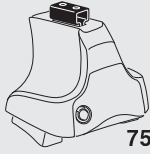


480 Traverse  
(North America)

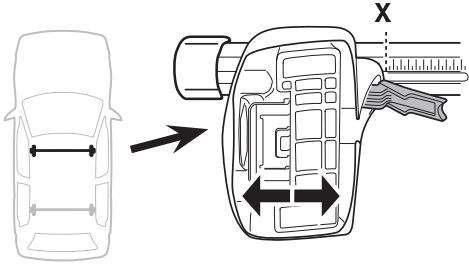


x4

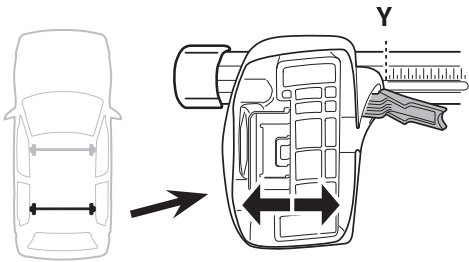
**3**



**754** Rapid System

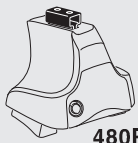


	<b>X</b>
<b>ISUZU D-Max, 4-dr Space Cab, 12-</b>	<b>38</b>
<b>ISUZU D-Max, 4-dr Extended Cab, 12-</b>	<b>38</b>



	<b>Y</b>
<b>ISUZU D-Max, 4-dr Space Cab, 12-</b>	<b>36</b>
<b>ISUZU D-Max, 4-dr Extended Cab, 12-</b>	<b>36</b>

**3**



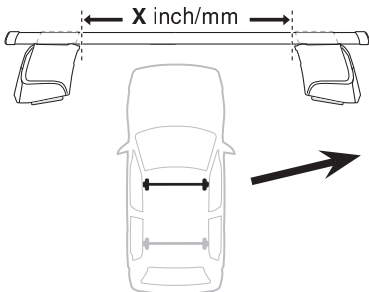
**480R** Rapid Traverse



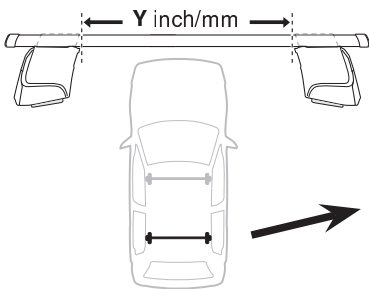
**480** Traverse



**(North America)**

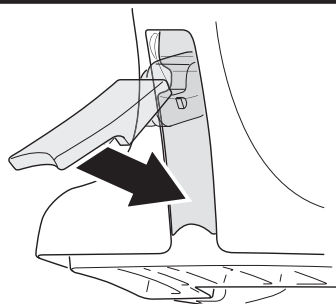


	<b>X inch</b>	<b>X mm</b>
<b>ISUZU D-Max, 4-dr Space Cab, 12-</b>	<b>40 <sup>5</sup>/<sub>8</sub> "</b>	<b>1031 mm</b>
<b>ISUZU D-Max, 4-dr Extended Cab, 12-</b>	<b>40 <sup>5</sup>/<sub>8</sub> "</b>	<b>1031 mm</b>



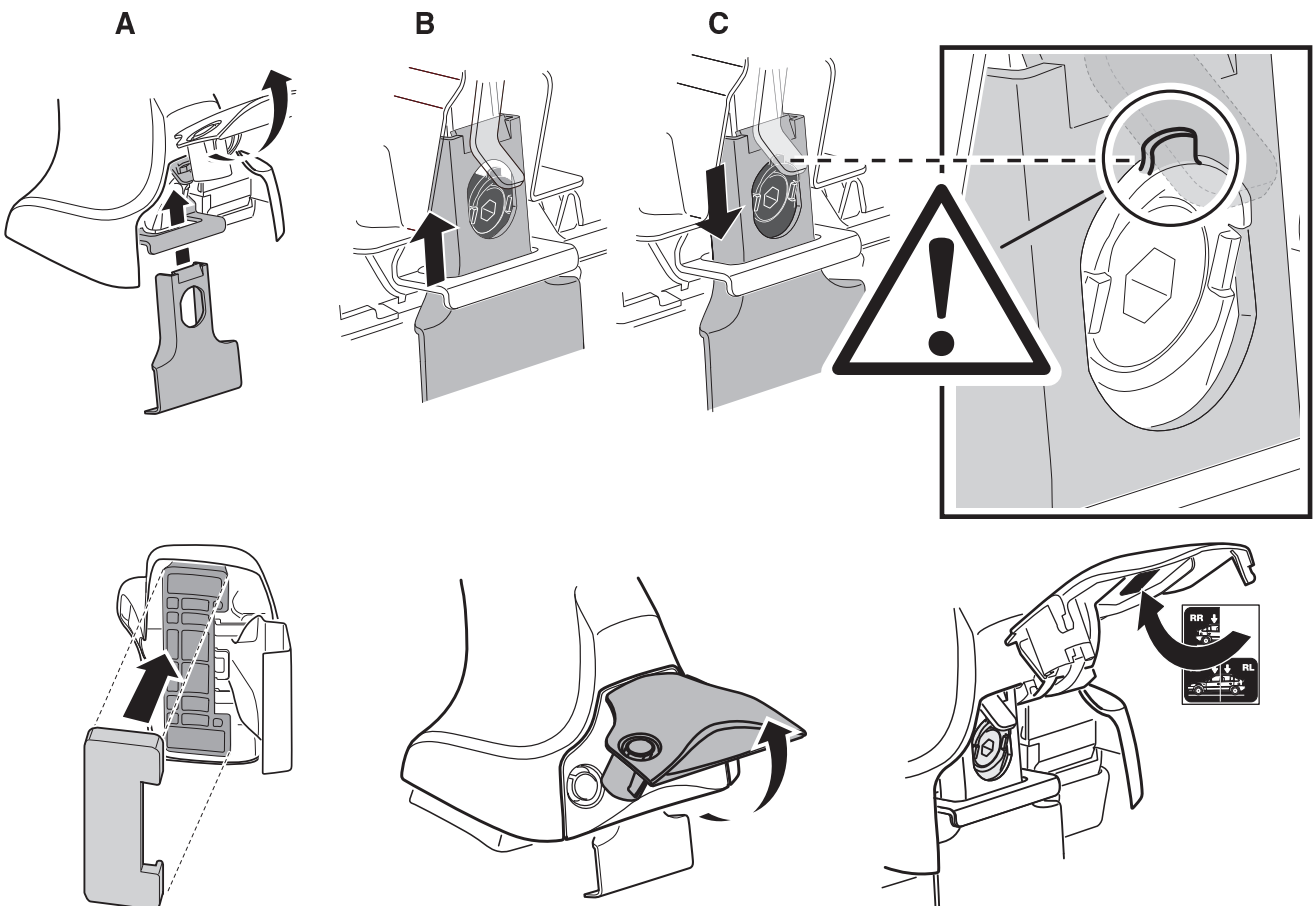
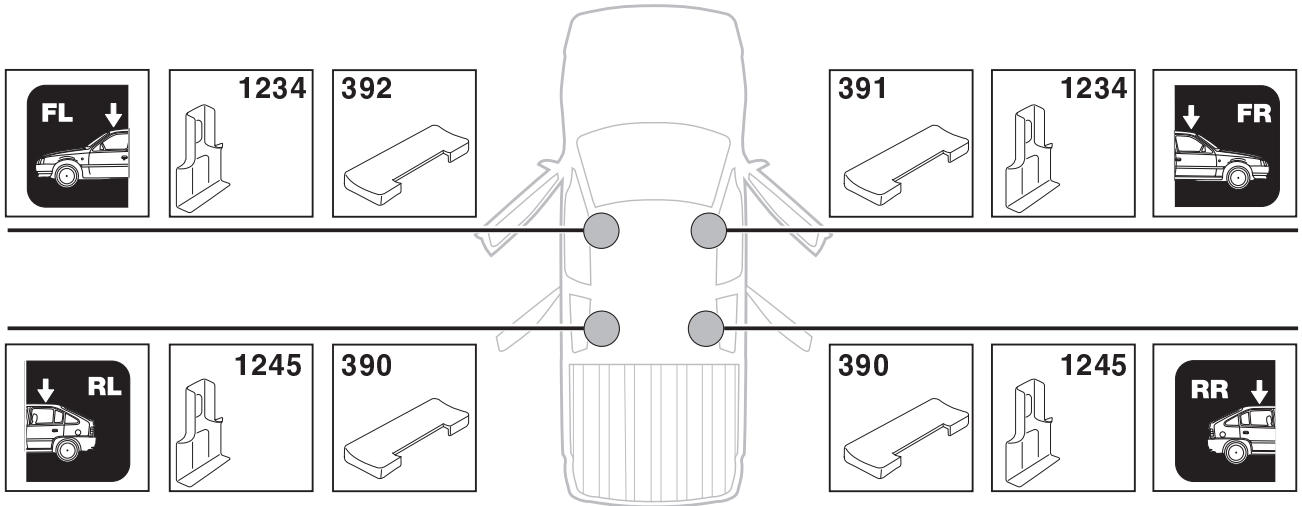
	<b>Y inch</b>	<b>Y mm</b>
<b>ISUZU D-Max, 4-dr Space Cab, 12-</b>	<b>39 <sup>3</sup>/<sub>4</sub> "</b>	<b>1011 mm</b>
<b>ISUZU D-Max, 4-dr Extended Cab, 12-</b>	<b>39 <sup>3</sup>/<sub>4</sub> "</b>	<b>1011 mm</b>

**4**

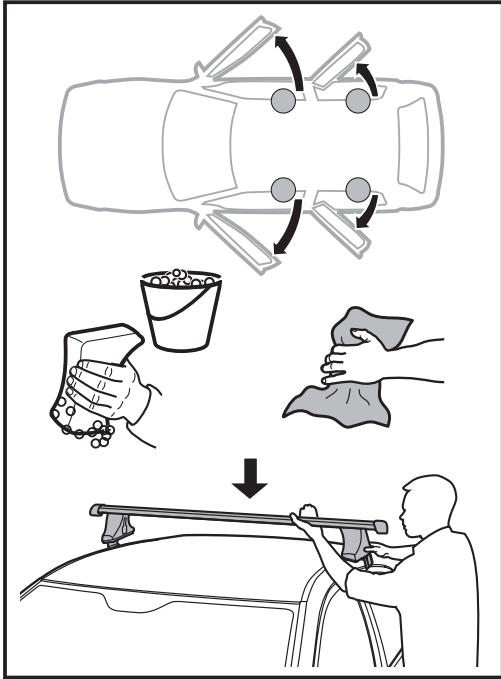


# 5

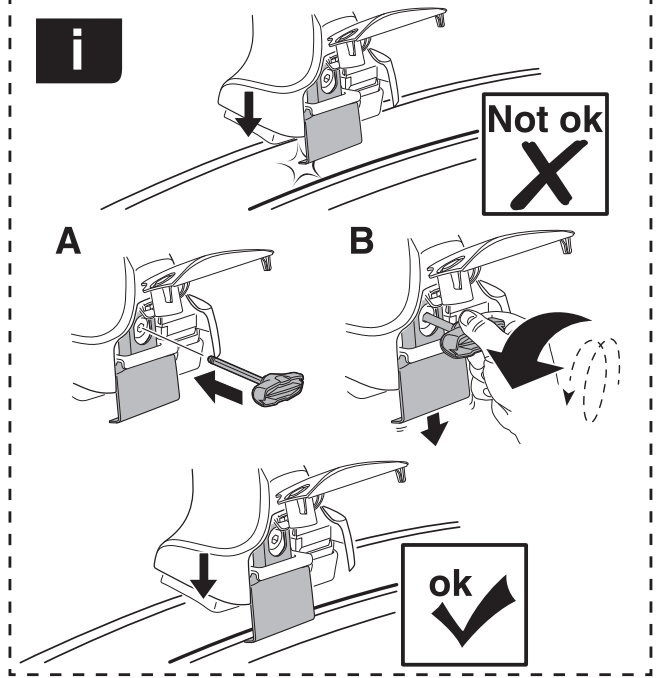
ISUZU D-Max, 4-dr Space Cab, 12-  
ISUZU D-Max, 4-dr Extended Cab, 12-



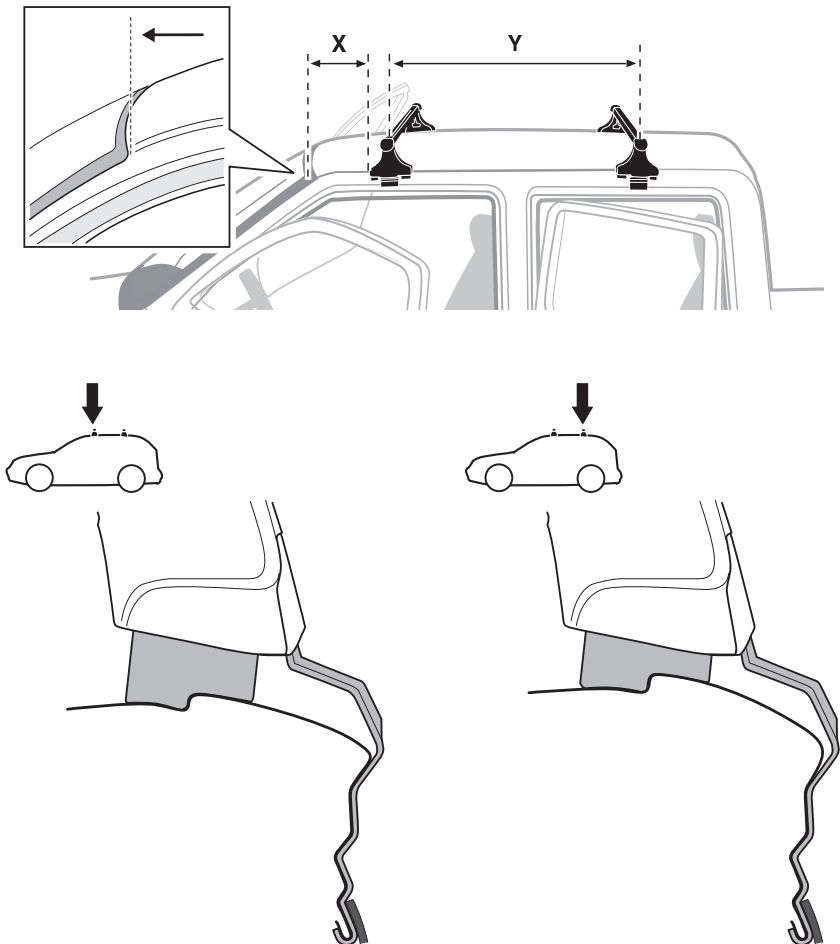
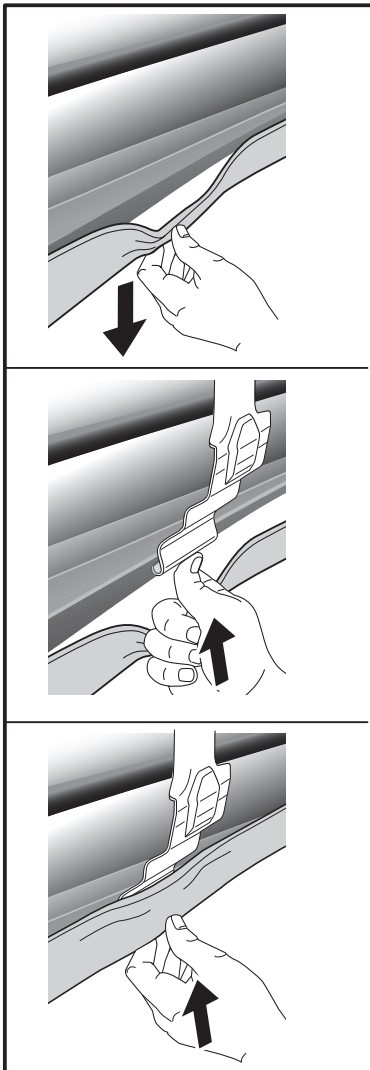
6



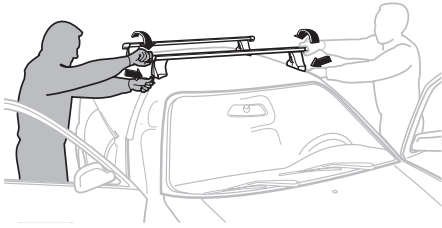
i



	X mm	Y mm	X inch	Y inch
ISUZU D-Max, 4-dr Space Cab, 12-	250 mm	670 mm	9 7/8"	26 3/8"
ISUZU D-Max, 4-dr Extended Cab, 12-	250 mm	670 mm	9 7/8"	26 3/8"

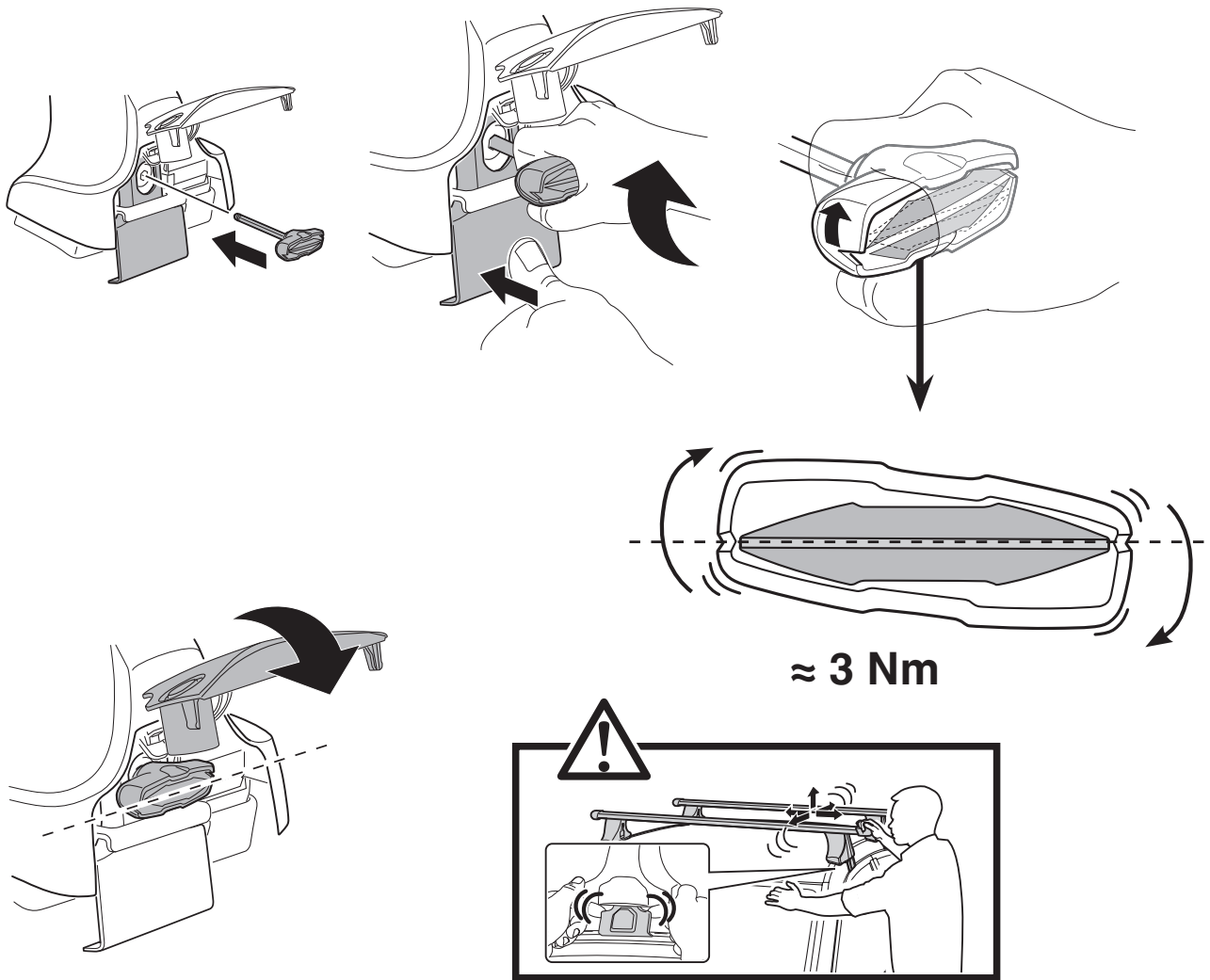


7



- GB/US** Tighten alternately
- D** Die Schrauben abwechselnd anziehen
- F** Serrer alternativement chaque côté
- NL** Afwisselend aan de linker- en de rechterkant aandraaien
- I** Alternare il serraggio delle viti
- E** Apretar alternativamente
- PT** Aperte alternadamente
- S** Dra åt växelvis
- FIN** Kierrä vuorotellen
- EST** Pinguldage vaheldumisi
- LAT** Pievelciet pamišus
- LIT** Užsukinėkite pakaitomis
- PL** Śruby dokręcaj naprzemiennie
- RU** Затягивайте попеременно

- CZ** Pokręťta багаžnika dokręcaj dokręcaj naprzemiennie.
- SK** Doťahujte striedavo
- SLO** Privijajte izmenično.
- HR** Naizmjenično zategnite
- HU** Egymástól fűggetlenül szorítandó
- GR** Σφιγγετε εναλλάξ
- TR** Dönüşümlü sıkın
- 中文** 交替拧紧
- 한국어** 번갈아 가며 조이십시오.
- 日本語** 交互に締め付けてください。
- ไทย** ชั้นในแบบสลับ

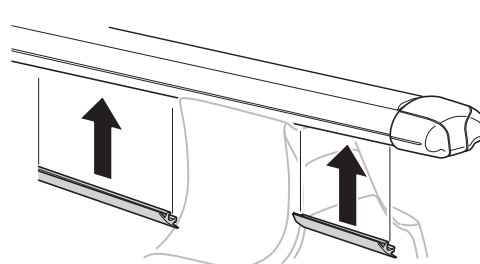
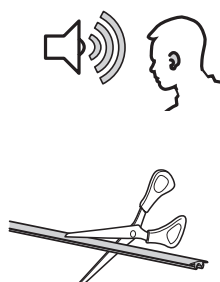


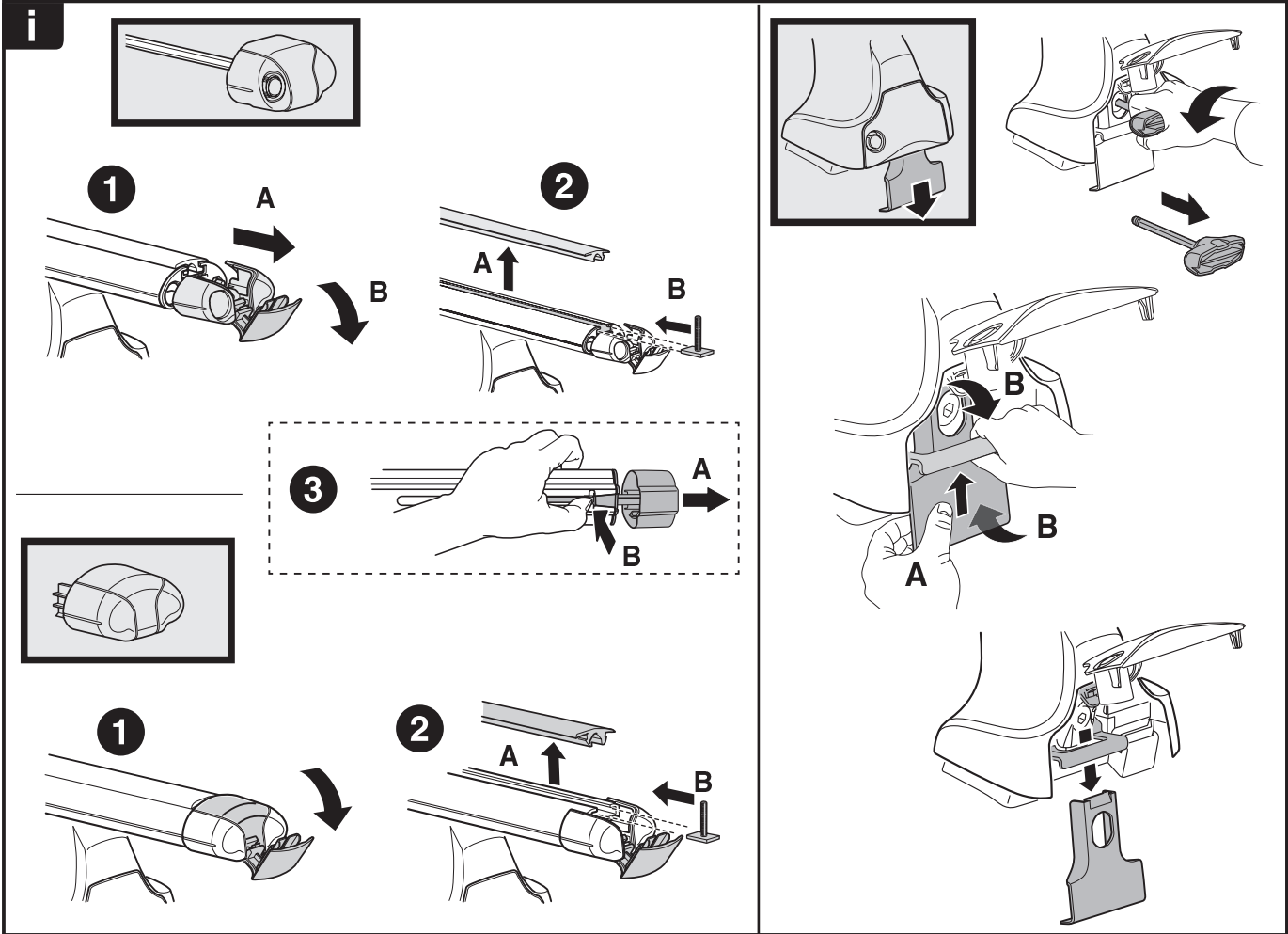
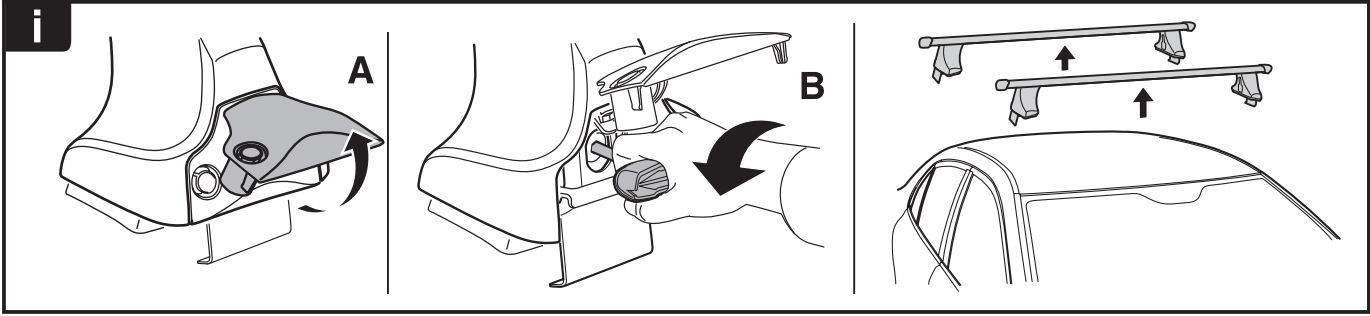
≈ 3 Nm

8

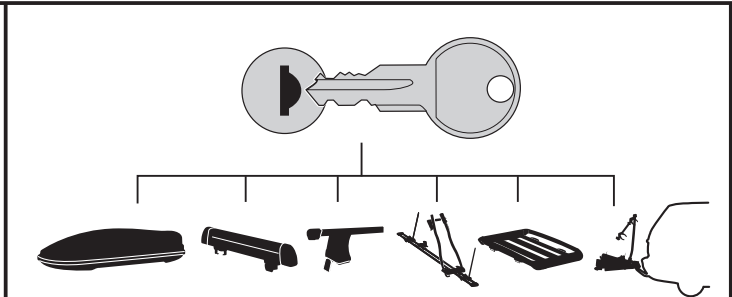


x1  
17 mm

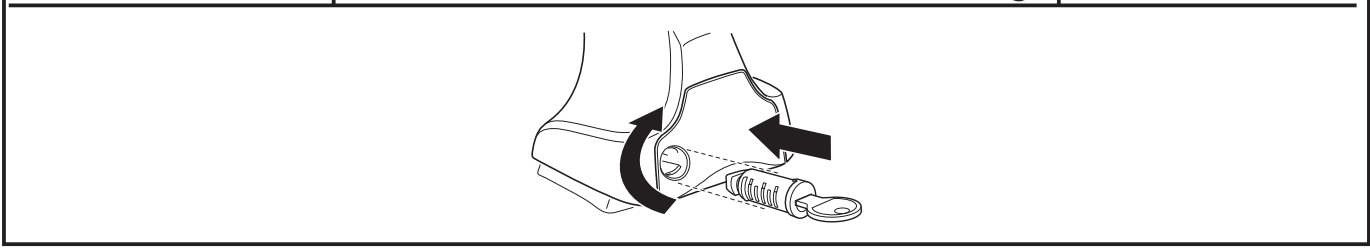




**THULE**  
SWEDEN  
**ONE  
KEY  
SYSTEM**



		(x4)
		(x6)
		(x8)
NA		(x10)
EUR		(x12)
ASIA		



WW ▶ Thule Sweden AB, Box 69, 330 33 Hillerstorp, SWEDEN  
NA ▶ Thule Inc., 42 Silvermine Road, Seymour, Connecticut 06483, USA

info@thule.com  
customer.service@thule.com

www.thule.com