

CENTRAL LOCK INSTALLATION USER'S MANUAL MLDC.

Before starting the installation, read the entire Installation Instruction carefully!!!

Please be careful when connecting wires!!!

1 Feed long cable from hardtop relay through car tailgate and along the chassis towards the front of the truck (Fig. 1) to motor room. Follow car



Fig. 1

2 Feed black and red cables near to battery (Fig. 2) and connect black wire to (-) and red to (+).

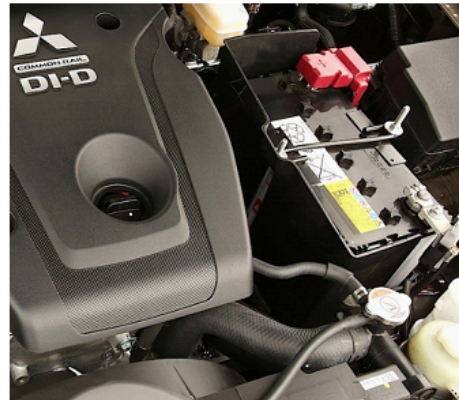


Fig. 2

3 In the motor room (Fig. 3) locate a grommet (Fig. 4) and feed other cables into the Vehicle .



Fig. 5

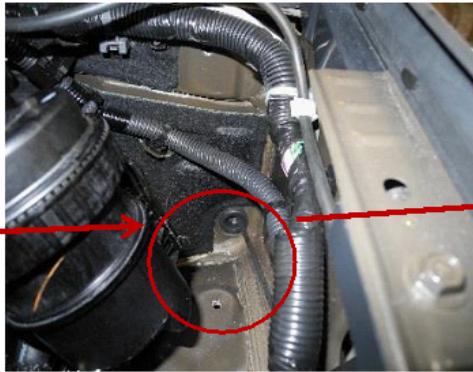


Fig. 5

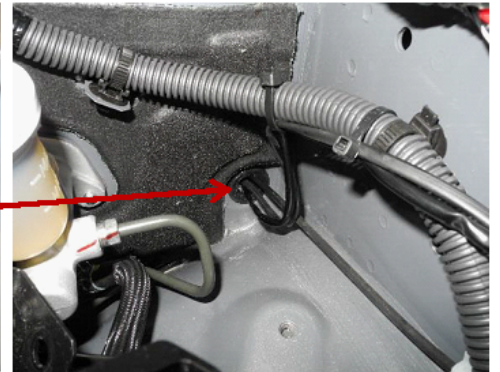


Fig. 5

- 4 Locate the plug indicated in the drawing (Fig. 6) where the car central lock cables are located and connect cables on vehicle loom to white and brown. (Fig. 7)

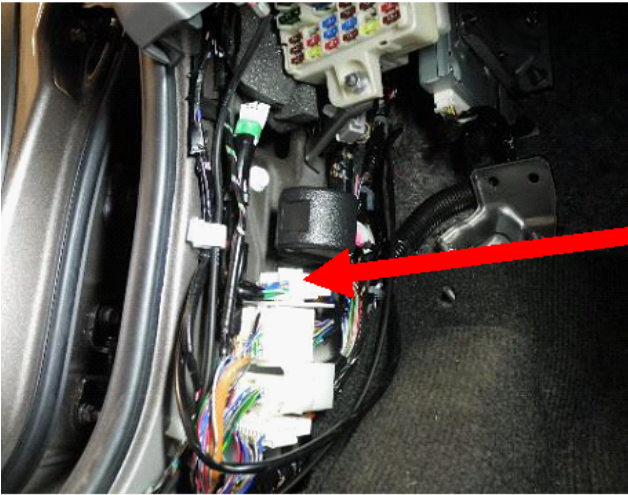


Fig. 6

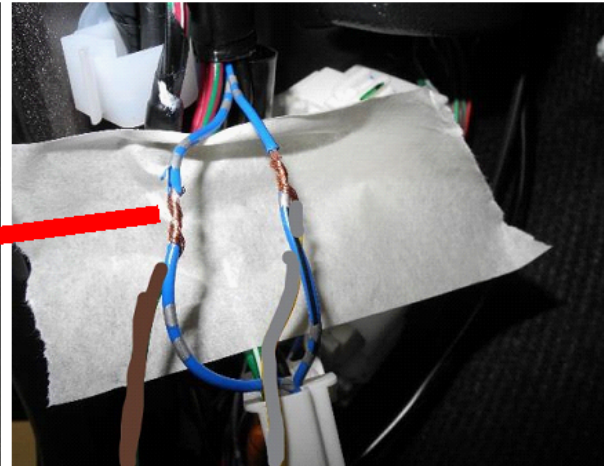


Fig. 7

- 5 Remove the car brake light (Fig. 8/9), connect hardtop brake light wire to it and re-install the rear light (Fig. 9).

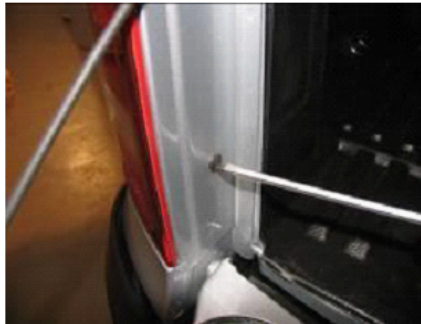


Fig. 8



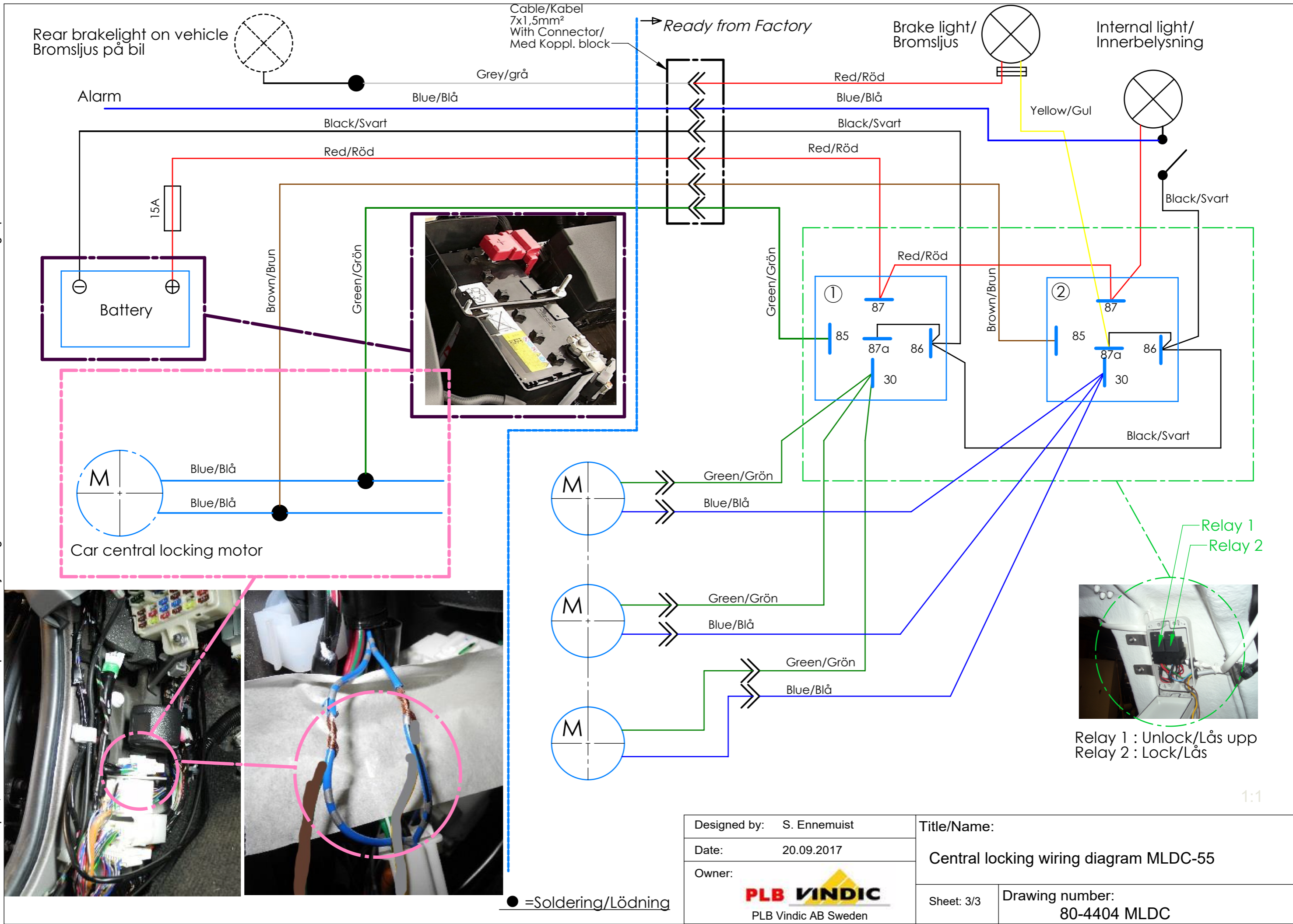
Fig. 9

- 6 When connecting wires it is recommended to use electrical tester to get correct fitting. When testing cables you should get a 12v flash reading when pressing the central locking. Cover any connection with electrical tape and keep away cables from heat sources such as exhaust system.

It is strongly recommended that installation is done by licenced Auto Electrician!!!

Any electrical faults due to improper installation will not be warranted by PLB Vindic AB!!!

This drawing is the property of PLB Vindic AB. It is strictly confidential and must not be copied, traced or loaned without permission. Any infringement of these conditions will lead to the institution of legal procedures



Designed by: S. Ennemuist	Title/Name:	
Date: 20.09.2017	Central locking wiring diagram MLDC-55	
Owner: PLB VINDIC PLB Vindic AB Sweden	Sheet: 3/3	Drawing number: 80-4404 MLDC