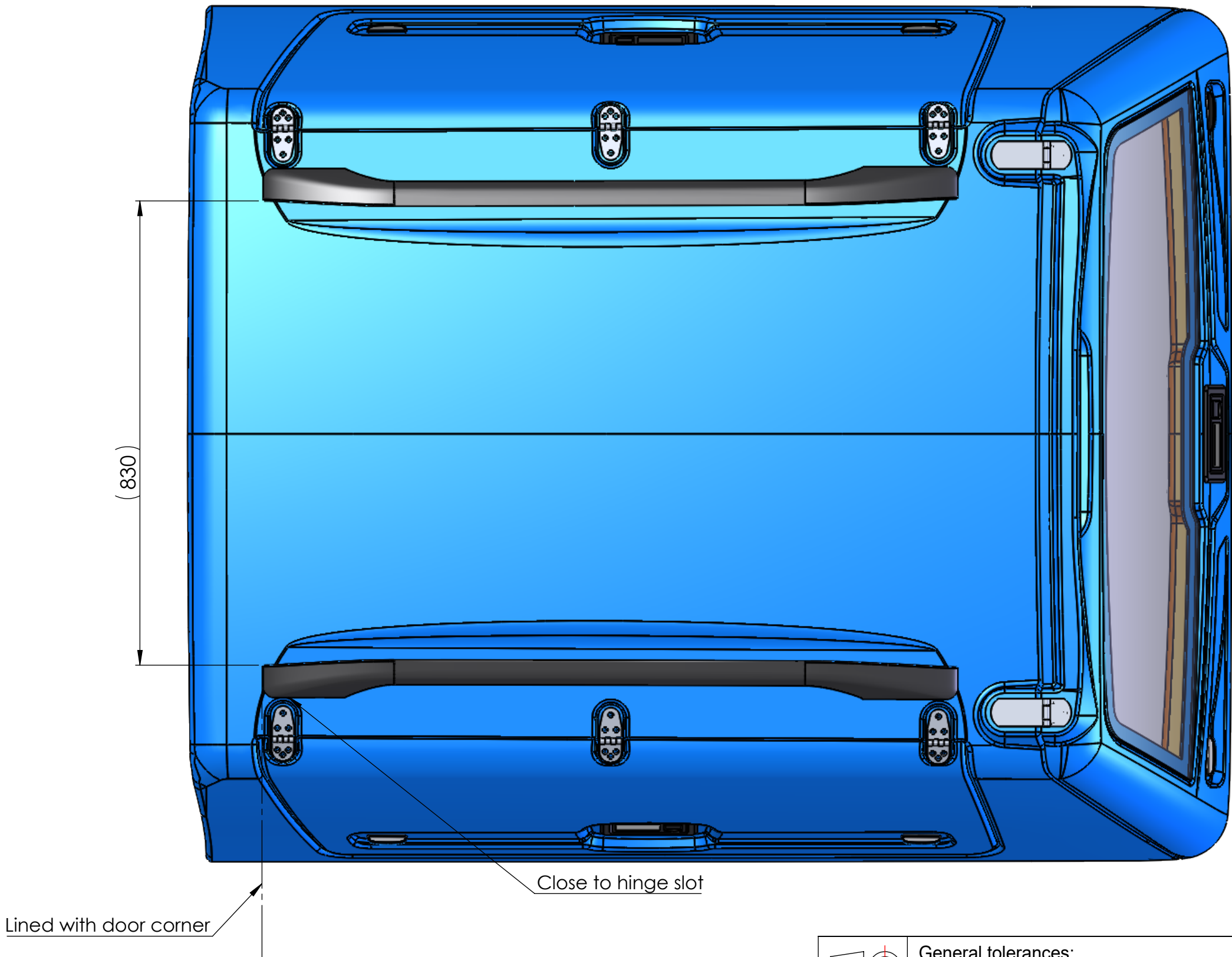
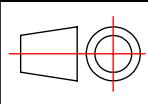

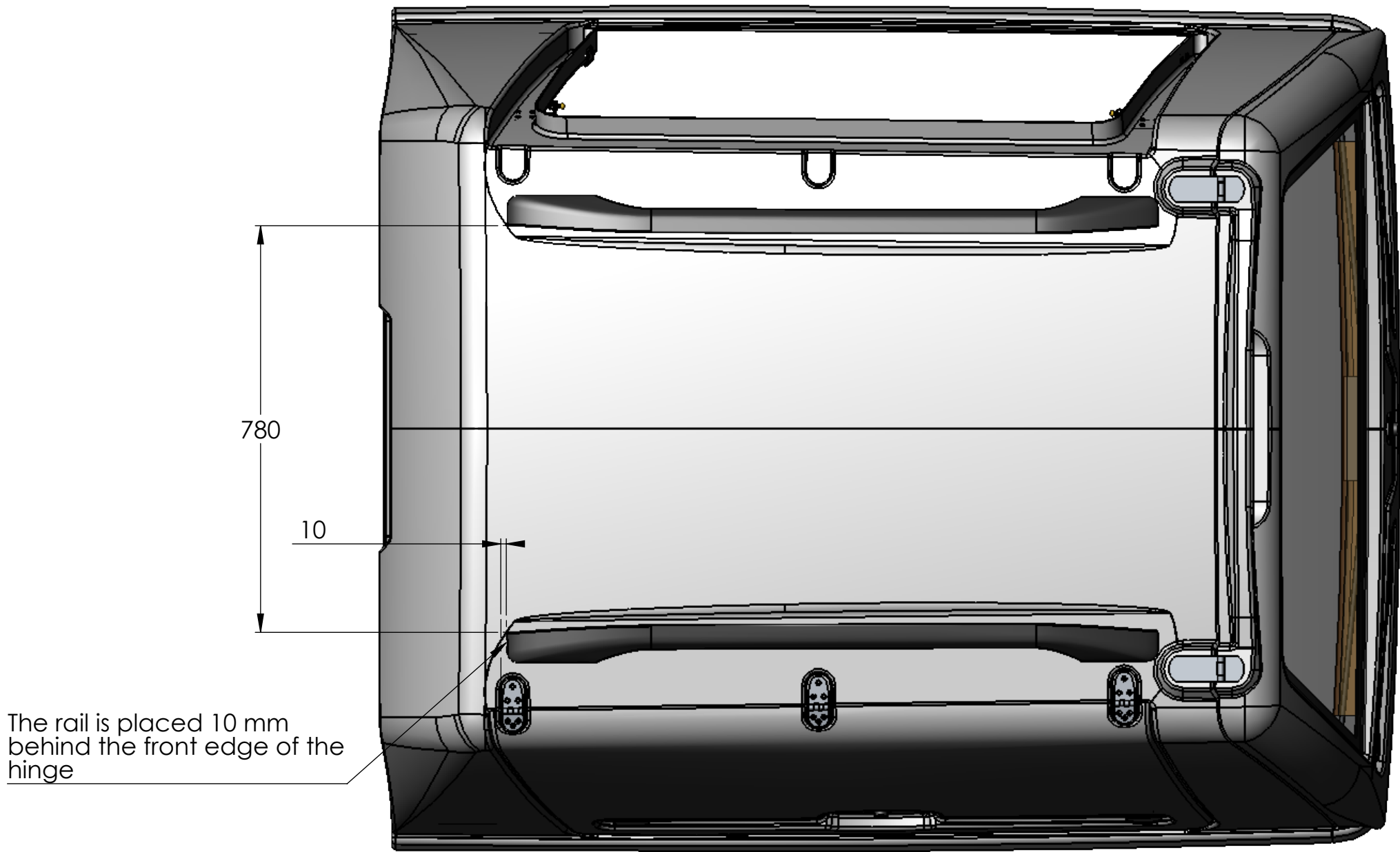


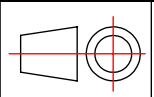

This drawing is the property of PLB Vindic AB. It is strictly confidential and must not be copied, traced or loaned without permission. Any infringement of these conditions will lead to the institution of legal procedures



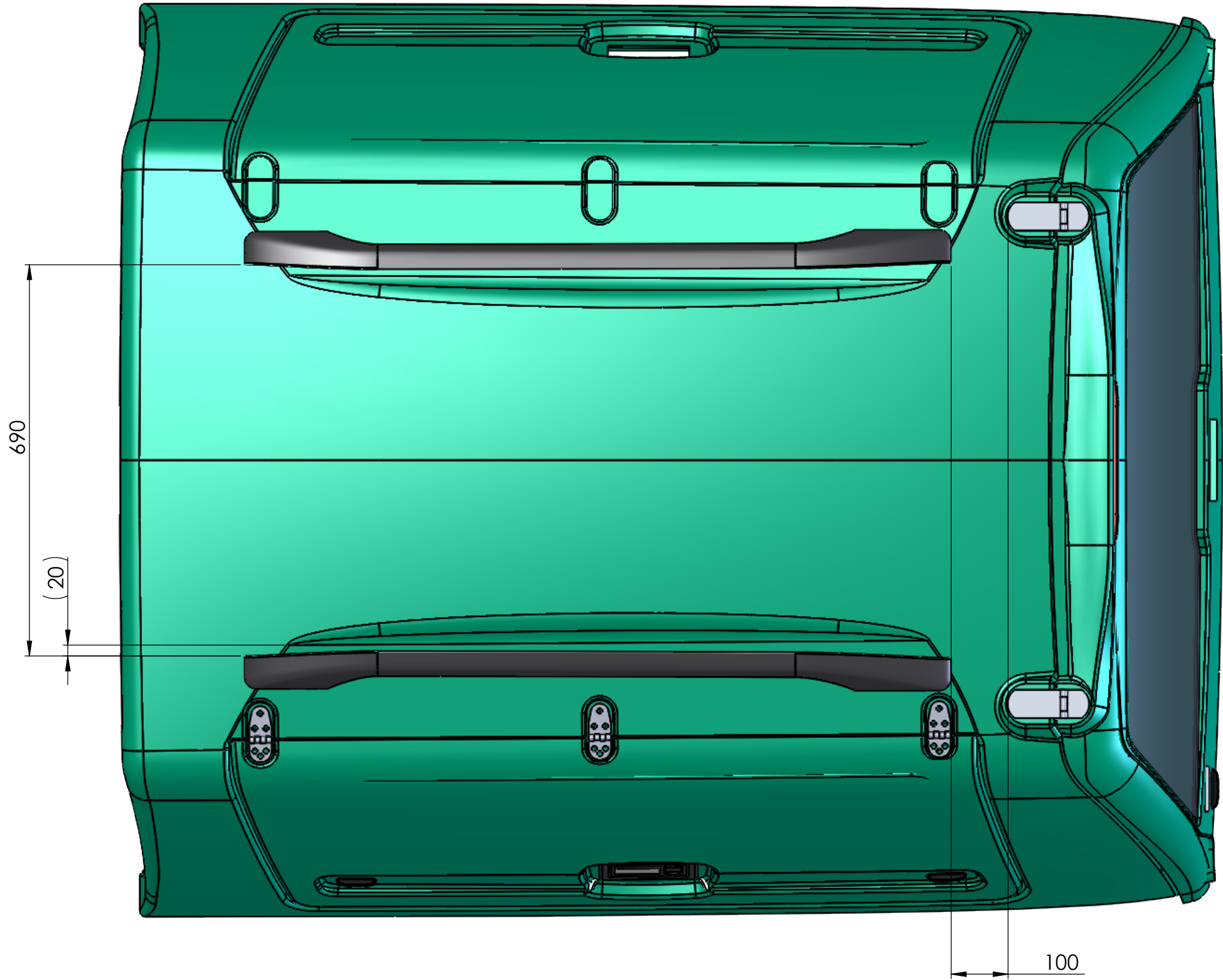
	General tolerances: ISO 2768-1m		Date: 04.12.2019	Scale: 1:8
	Designed by: S. Ennemuist	Title/Name: FMEC-0055;-1155 Rails 80-1181		
	Checked by: M. Männapuu			
Owner:  PLB Vindic AB Sweden		Sheet: 1/1	Drawing number: FMEC-0055;-1155 Rails	

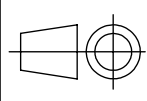

This drawing is the property of PLB Vindic AB. It is strictly confidential and must not be copied, traced or loaned without permission. Any infringement of these conditions will lead to the institution of legal procedures



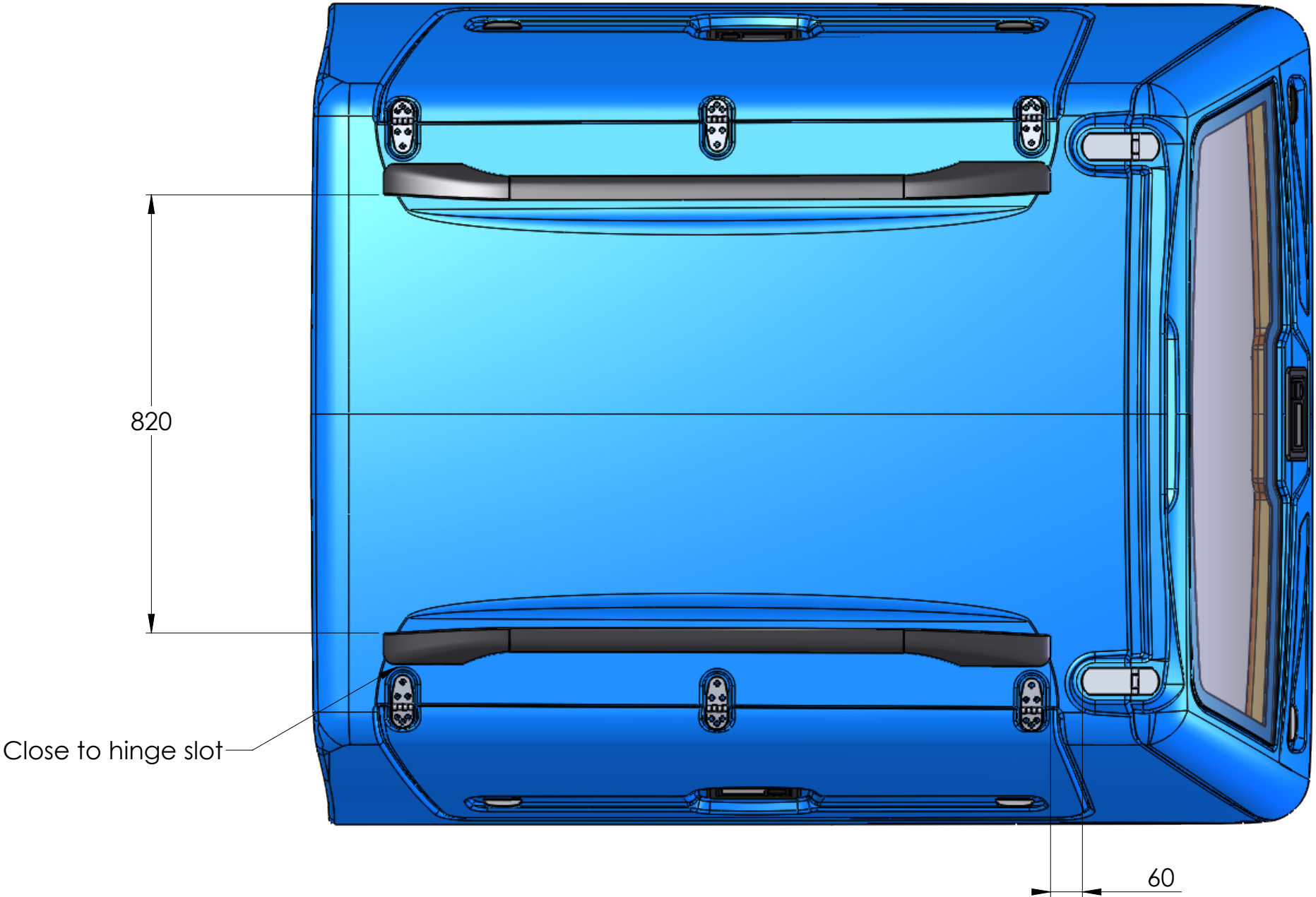
	General tolerances: ISO 2768-1m		Date: 08.12.2019	Scale: 1:10
	Designed by: S. Ennemuist	Title/Name: IZE-1188-Rails 80-1181		
	Checked by: M. Männapuu			
Owner:  PLB Vindic AB Sweden		Sheet: 1/1	Drawing number: IZE-1188-Rails 80-1181	

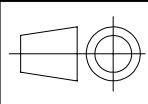

This drawing is the property of PLB Vindic AB. It is strictly confidential and must not be copied, traced or loaned without permission. Any infringement of these conditions will lead to the institution of legal procedures



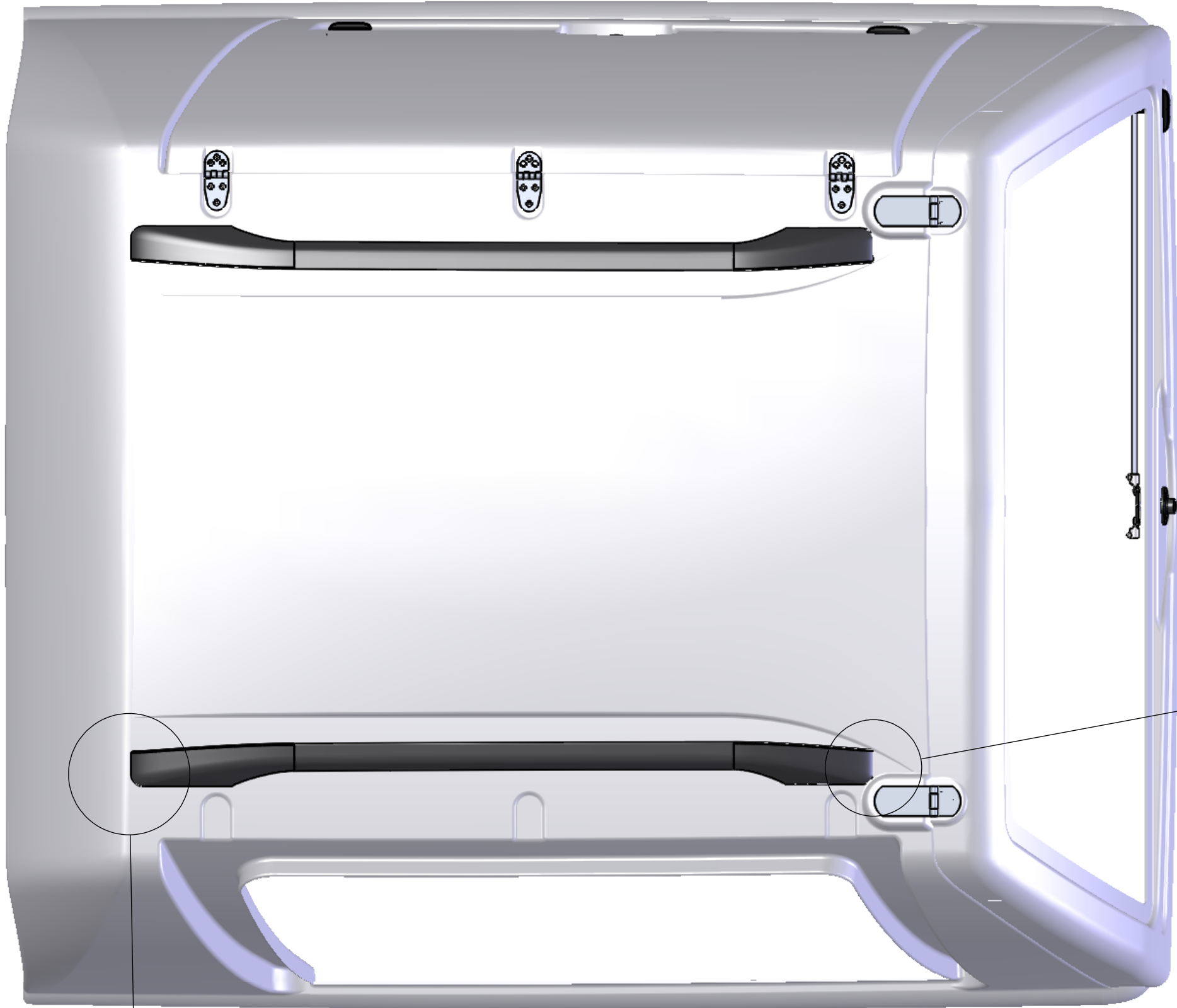
	General tolerances: ISO 2768-1m		Date: 03.12.2019	Scale: 1:8
	Designed by: S. Ennemuist	Title/Name: MC; MCC-55 and MC-0; MCC-33 Rails 80-1181		
	Checked by: M. Männapuu			
Owner:  PLB Vindic AB Sweden		Sheet: 1/1	Drawing number: MC; MCC-55 and MC-0; MCC-33	

This drawing is the property of PLB Vindic AB. It is strictly confidential and must not be copied, traced or loaned without permission. Any infringement of these conditions will lead to the institution of legal procedures

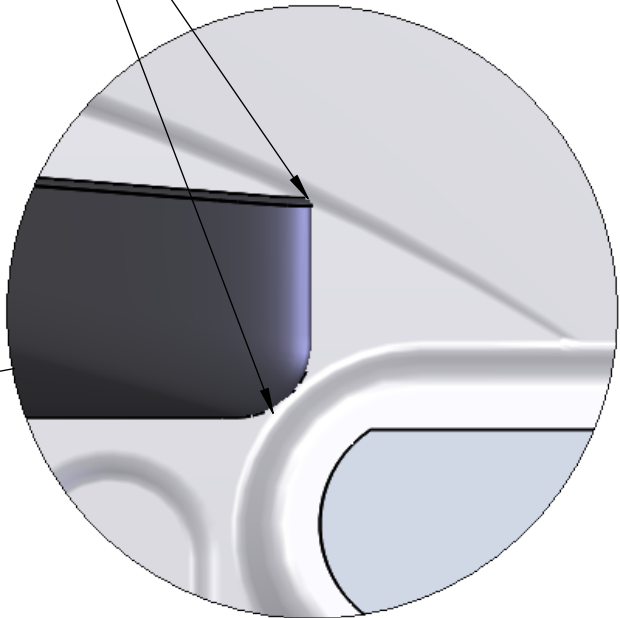


	General tolerances: ISO 2768-1m		Date: 03.12.2019	Scale: 1:10
	Designed by: S. Ennemuist	Title/Name: MCLC-55 Rails 80-1181		
	Checked by: M. Männapuu			
	Owner:  PLB Vindic AB Sweden	Sheet: 1/1	Drawing number: MCLC-55	

This drawing is the property of PLB Vindic AB. It is strictly confidential and must not be copied, traced or loaned without permission. Any infringement of these conditions will lead to the institution of legal procedures

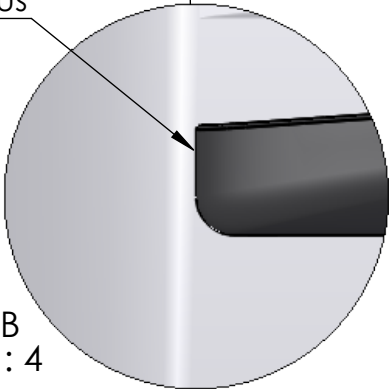


AS close as possible to surface radius

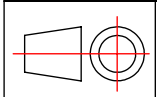



DETAIL A
SCALE 1 : 2

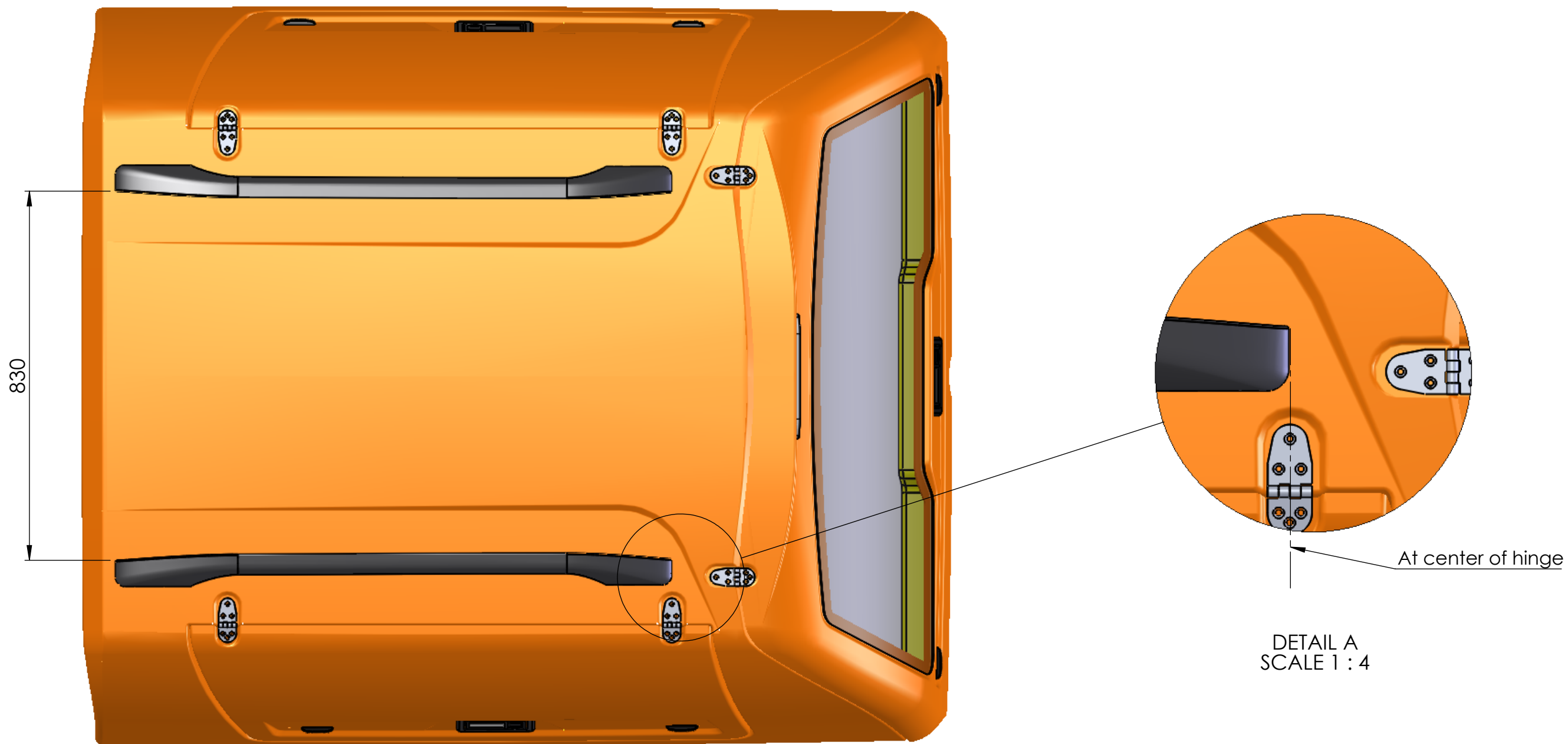
Close to the radius



DETAIL B
SCALE 1 : 4

	General tolerances: ISO 2768-1m		Date: 08.12.2019	Scale: 1:8
	Designed by: S. Ennemuist	Title/Name: NIK-0088, -1188 Rails 80-1181		
	Checked by: M. Männapuu			
Owner:  PLB Vindic AB Sweden	Sheet: 1/1	Drawing number: NIK-0088, -1188		

This drawing is the property of PLB Vindic AB. It is strictly confidential and must not be copied, traced or loaned without permission. Any infringement of these conditions will lead to the institution of legal procedures



	General tolerances: ISO 2768-1m		Date: 08.12.2019	Scale: 1:10
	Designed by: S. Ennemuist	Title/Name: NIKC-0055, -1155, -1133. NIK-900, -1100 Rails 80-1181		
	Checked by: M. Männapuu			
	Owner: PLB Vindic AB Sweden	Sheet: 1/1	Drawing number: NIKC-0055, -1155, -1133. NIK-900, -1100	