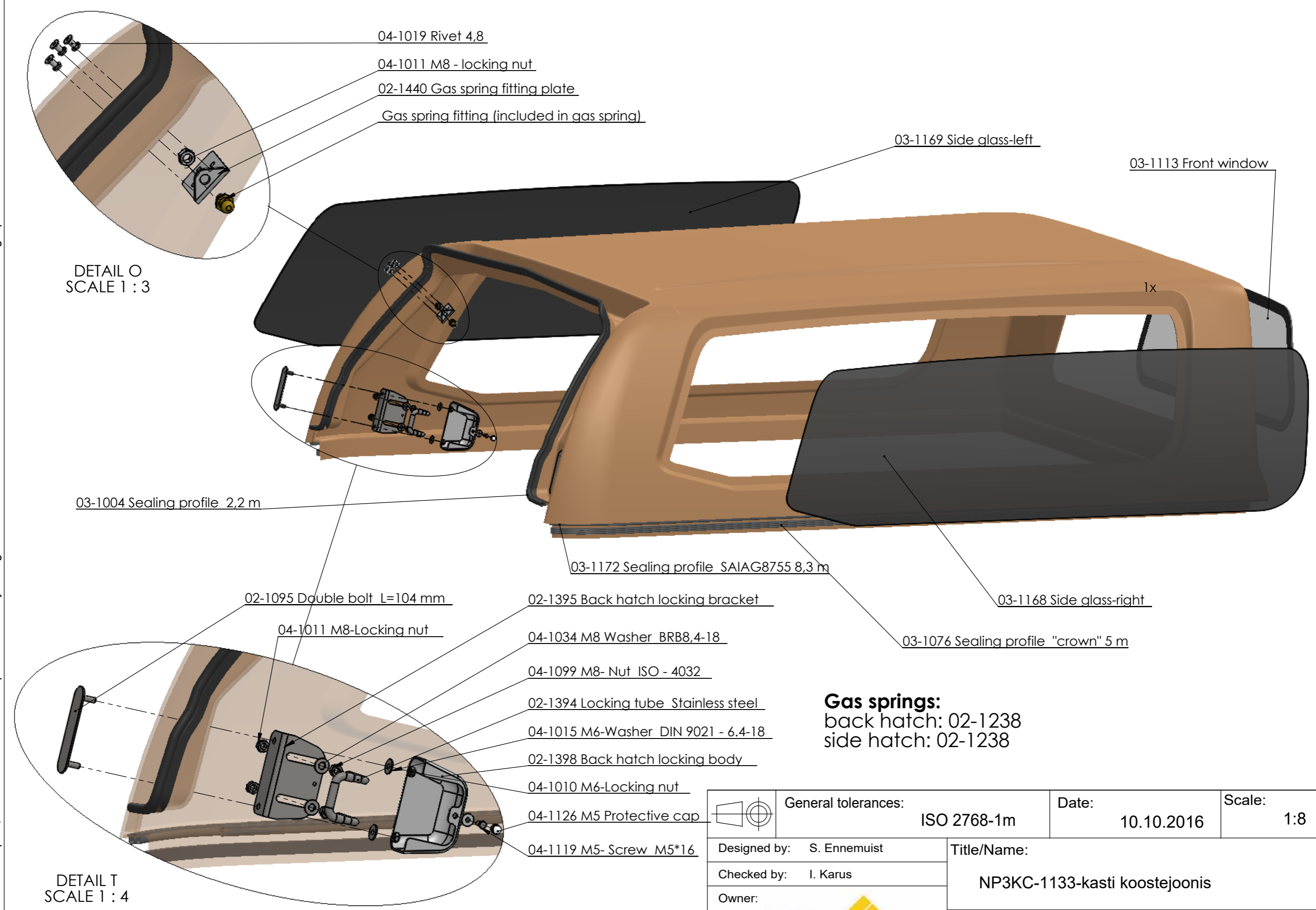


This drawing is the property of PLB Vindic AB. It is strictly confidential and must not be copied, traced or loaned without permission. Any infringement of these conditions will lead to the institution of legal procedures



- 04-1019 Rivet 4,8
- 04-1011 M8 - locking nut
- 02-1440 Gas spring fitting plate
- Gas spring fitting (included in gas spring)

- 03-1169 Side glass-left
- 03-1113 Front window

DETAIL O  
SCALE 1 : 3

03-1004 Sealing profile 2,2 m

03-1172 Sealing profile SAIAG8755 8,3 m

03-1168 Side glass-right

02-1095 Double bolt L=104 mm

02-1395 Back hatch locking bracket

03-1076 Sealing profile "crown" 5 m

04-1011 M8-Locking nut

04-1034 M8 Washer BRB8,4-18

04-1099 M8- Nut ISO - 4032

**Gas springs:**  
back hatch: 02-1238  
side hatch: 02-1238

02-1394 Locking tube Stainless steel

04-1015 M6-Washer DIN 9021 - 6.4-18

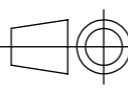

02-1398 Back hatch locking body

04-1010 M6-Locking nut

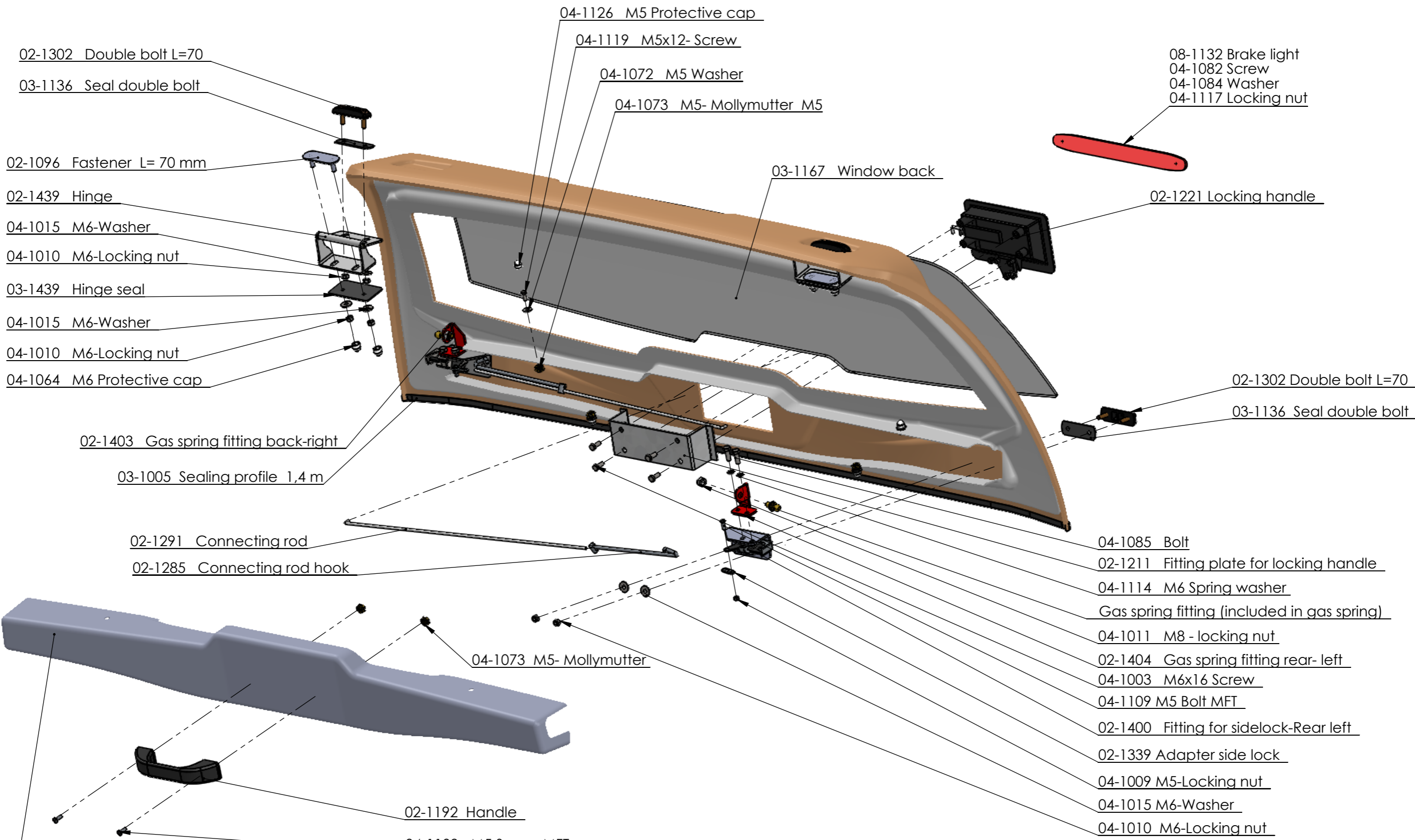
DETAIL T  
SCALE 1 : 4

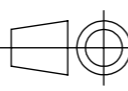

04-1126 M5 Protective cap

04-1119 M5- Screw M5\*16

	General tolerances:	ISO 2768-1m	Date:	10.10.2016	Scale:	1:8
	Designed by:	S. Ennemuist	Title/Name:			
Checked by:	I. Karus	NP3KC-1133-kasti koostejoonis				
Owner:	 PLB Vindic AB Sweden		Sheet: 1/1	Drawing number: NP3KC-01.202		

This drawing is the property of PLB Vindic AB. It is strictly confidential and must not be copied, traced or loaned without permission. Any infringement of these conditions will lead to the institution of legal procedures



	General tolerances:	ISO 2768-1m	Date:	28.02.2017	Scale:	1:6
	Designed by:	S. Ennemuist	Title/Name:			
Checked by:	I. Karus	NP3DC-55, NP3DC-1133, NP3KC-55 and NP3KC-1133 back hatch assembly drawing				
Owner:	 PLB Vindic AB Sweden	Sheet: 1/1	Drawing number: NP3DC-03.201			